

S7

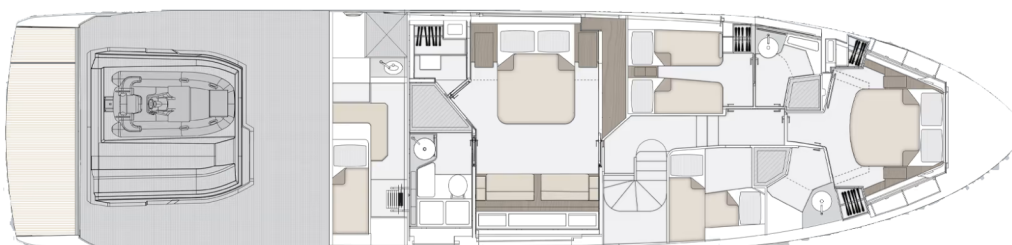
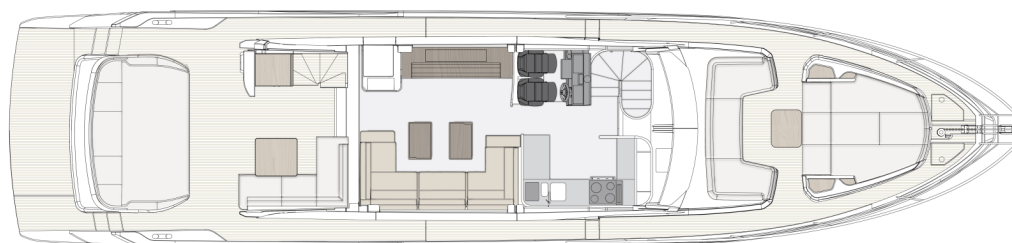
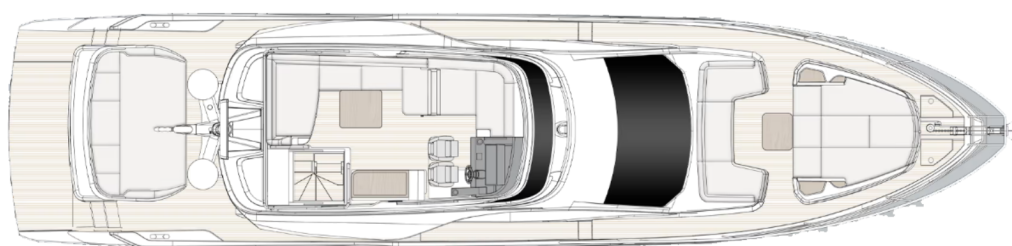
NEW S7



TECHNICAL SPECIFICATIONS S7 (FROM HULL 101)

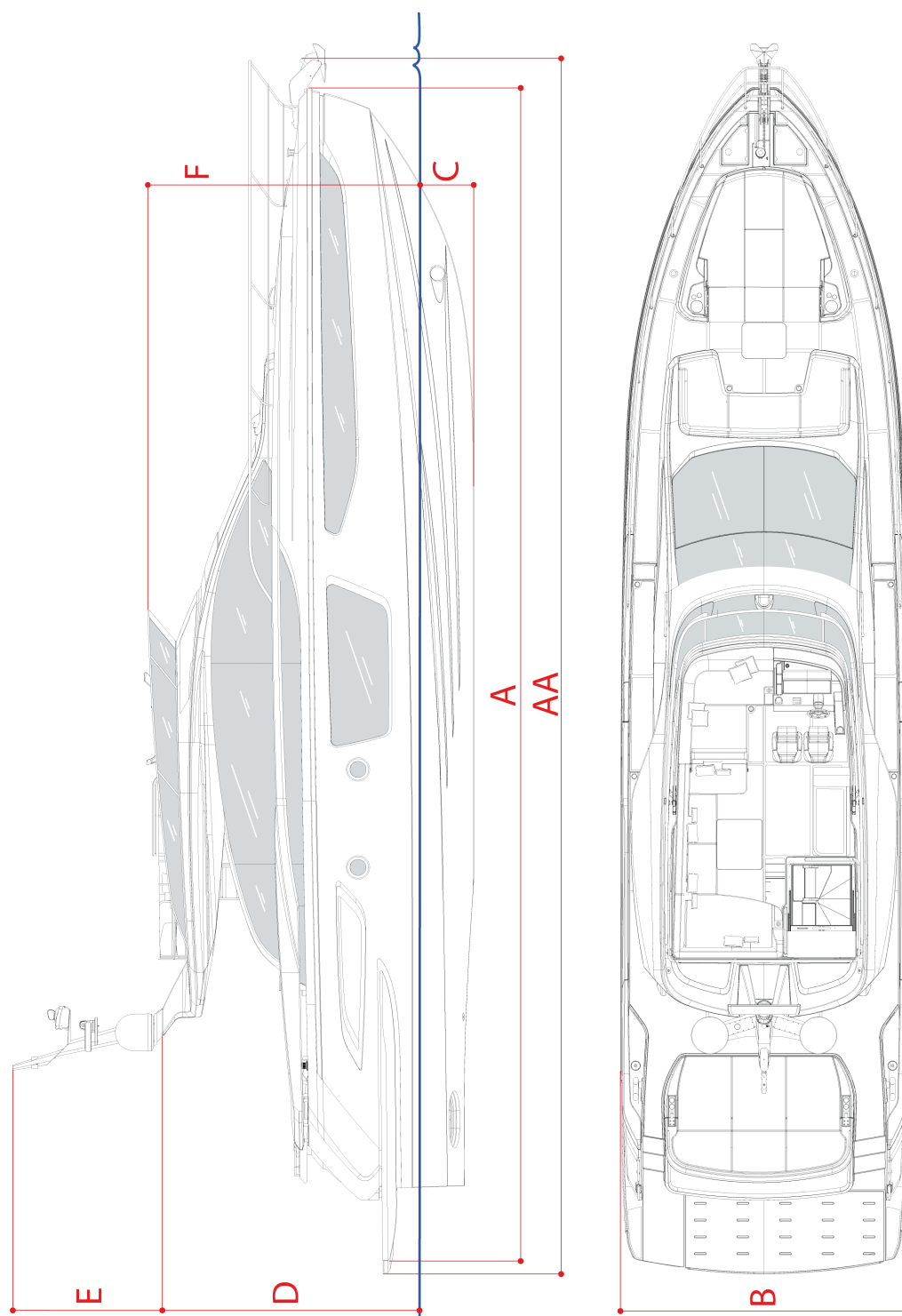
S7 (FROM HULL 101)

General plans (the image is to be considered as indicative only)



TECHNICAL SPECIFICATIONS S7 (FROM HULL 101)

Dimensional diagram (figure shown for indicative purposes)



TECHNICAL SPECIFICATIONS S7 (FROM HULL 101)

Main characteristics

The following tables list the boat's main characteristics.

Dimensions and weights

(AA) Maximum length L_{MAX} ISO 8666 (stern platform, pulpit overhang, bow roller, and rub-rails included)	21.68 m (71' 2")
(A) Hull length L_H ISO 8666 (net GRP, excluding stern platform)	20.91 m (68' 7")
Waterline length L_{WL} ISO 8666 (with full load)	18.00 m (59' 1")
(B) Maximum beam B_{MAX} ISO 8666 (at aft protections)	5.15 m (16' 11")
(C) Draught T_{keel} ISO 8666 (with full load)	1.03 m (3' 5")
Draught T_{MAX} ISO 8666 (at the propellers)	1.69 m (5' 7")
(D) Height H_A ISO 8666 (from waterline to radar arch)	4.54 m (14' 11")
(E) Height H_{mast} (from radar arch to light mast)	3.10 m (10' 2")
(F) Height H_{screen} (from waterline to flybridge screen)	4.80 m (15' 9")
Maximum load recommended by the manufacturer ((Max. no. people on board x 75kg) + (Max. no. people on board x 30 kg baggage))	1,470 kg (3,240.8 lb)

Loaded displacement m_{LDC} ISO 8666 (boat mass with full tanks + max. no. of crew members and personal equipment + life raft, with tender)	46 t (45.3 tn l.)
Light displacement m_{LCC} ISO 8666 (boat mass with empty tanks without crew and equipment)	37.1 t (36.51 tn l.)

Tank capacity

Diesel tank capacity (total)	3,800 l (1,003.9 US. liq.gal.)
Fresh water tank capacity	1,000 l (264.2 US. liq.gal.)
Black water tank capacity	350 l (92.5 US. liq.gal.)
Gray water tank capacity	200 l (52.8 US. liq.gal.)
Total capacity of tanks	5,350 l (1,413.3 US. liq.gal.)

Layout and structure

Cabins	4 + 1 crew cabin
Beds	8 + 2 crew cabin
Heads	3 + 1 crew cabin
Material	GRP+ CARBON
Hull	Planing, 13.8° deadrise at the stern 18.4° deadrise amidships

TECHNICAL SPECIFICATIONS S7 (FROM HULL 101)

Hull designer	Pierluigi Ausonio Naval Architect & Azimut yachts
Exterior designer	Alberto Mancini
Interior decorator	Azimut yachts

Approval category and capacity

CE type approval category	A
Maximum capacity	14 people

Performance

Maximum speed (*)	35 kn
Cruising speed (*)	27 kn
Maximum speed consumption (*)	450 l/h (118.80 US.liq.gal./h)
Cruising speed consumption (*)	302 l/h (79.78 US.liq.gal./h)
Range at cruising speed (*) (excluding 10% for fuel that cannot be pumped)	305 nmi

N.B.

(*) All performance specified in the table above applies to a standard configuration boat (standard equipment installed excluding tender, jet ski, etc.) with clean hull, propellers, and rudders.

Furthermore, the performance indicated above has been defined under good sea and wind conditions (Beaufort Scale level 1, Douglas Scale level 1, ambient T < 25 °C, seawater T = 15 °C, atmospheric P = 1013.25 hPa) with two people on board, 25% fuel, and fresh, gray, and black water tanks empty.

Different or harsher sea conditions may significantly affect performance.

N.B.

The addition of one seakeeper, tender, and jet-ski leads to a further reduction of one knot.

GRP frame

CARBON MANUFACTURE TECHNOLOGY

	CARBON FIBER	FIBER-GLASS
HULL		X
DECK	HYBRID	
DECKHOUSE		X
FLYBRIDGE	X	
GARAGE / STERN PLATFORM DOOR AND TRAY	X	

TYPE OF RESIN

	VINYL ESTER	POLYESTER
HULL SKIN COAT	X	
HULL CORE CONSTRUCTION	X	
DECK SKIN COAT	X	
DECK CORE CONSTRUCTION	X	
SUPERSTRUCTURE SKIN COAT	X	
SUPERSTRUCTURE SKIN COAT	X	
FLYBRIDGE SKIN COAT	X	
FLYBRIDGE CORE CONSTRUCTION	X	
TRAYS		X

TECHNICAL SPECIFICATIONS S7 (FROM HULL 101)

Tables of propulsion system component characteristics

Engines

Manufacturer	VOLVO Penta
Model	D13-800
Type	6-cylinder diesel engine
Max. power	three 588 kW (800 hp)

Reduction gears / marine gears

Manufacturer	VOLVO Penta
Model	IPS 1050
Reduction ratio	1.99

IPS propellers

Model	4-blade Q6
Quantity	Six (two counter-rotating twin propellers per IPS drive)

Steering system

Type	Electronic progressive
Quantity	Three, integrated
Bow thrusters (OPT)	10 kW SIDE POWER 24 V

Sportfly

- Accessible from cockpit, through ladder
- Helm seat with seat cover
- Sunbed AREA on dashboard side with protective cushion cover and two glass racks
- Non-slip floor
- Plexiglas flybridge screen with black painted stainless steel frame

- Plexiglas three-sector hatch with aluminum frame and stainless steel rails
- Stainless steel handrails
- Navigation and not-under-control lights support mast
- Dashboard consisting of:
 - BRONZE Package electronic instrumentation (chart plotter with monitoring system, integrated water temperature, depth, speed, and chain length reading, engine control with automatic pilot and trip computer)
 - horn, anchor winch, chain washing pump, MUTE, and flybridge light activation switches
 - Volvo Penta engine handles with single lever, automatic interceptors and LOW SPEED system
 - Volvo Penta maneuvering joystick with joystick driving
 - Adjustable steering wheel
 - Second VHF station
 - 12 V socket
- Dashboard cover
- S7 logo, placed outside, one per side

Bow / walk arounds

Bow

- 40 kg (88.2 lb) steel anchor
- Stainless steel anchor roller
- Double hatch giving access to chain locker with drainage and fenders compartment; GRP doors with gas pistons
- Galvanized chain Ø 10 mm (0.39 in), L = 90 m (295'3")
- Anchor winch 2000 W / - 24 V
- Anchor winch and chain washing pump controls
- Chain washing pump
- Stainless steel anchor line anti-rubbing protections
- Two stainless steel oval cleats

TECHNICAL SPECIFICATIONS S7 (FROM HULL 101)

- Hatch (escape route) from VIP cabin on fore sunbed area
- Fore sunbed area cushions with cushion covers and four steel glass racks
- Fore dinette cushions with cushion covers and four steel glass racks
- Windscreen wiper system

Walk arounds

- Stainless steel and fiberglass pulpit
- Rubber rub-rail with knurled stainless steel section
- Side boarding gates
- Walk arounds with anti-slip floor
- Refueling and water filling plugs, black water suction points on walk arounds
- Tempered glass side windows of deck-house bonded to GRP structure
- Semi-automatic watertight side door leading down to crew cabin on starboard side of superstructure
- Two amidship stainless steel cleats on washboard
- Azimut logo, placed on side air intakes, one per side

- Ceiling-mounted watertight loudspeakers
- External GRP bar cabinet with:
 - Sink
- Cockpit hatch leading to the engine room, inserted in the generator unloading fix hatch on floor board
- Engine room access ladder
- Emergency panel-battery cut-out with controls for: battery cut-out (service, engine and generator)
- Two port and starboard below cleat lockers with controls for manual bilge pump and activation of engine room fire extinguishing system (starboard side)
- Two central below cleat lockers, port and starboard sides, with lines storing compartment
- Two aft below cleat lockers, port and starboard, with shore power socket
- Cockpit floor in teak
- Saloon entrance door with steel fix frame, doors in painted aluminum and tempered glass, with four panels of which three mobile and completely foldable to the right

Cockpit / platform

Cockpit

- Can be accessed from outside via the gangway and from the stern platform via two connecting stairways
- Two steel aft gates
- Mooring stations with:
 - two T-head cleats
 - two stainless steel chocks
- Lockers under the sunbed area
- Aft sunbed cushions with cushion covers and four glass racks
- Stairway leading to sportfly with steel structure and teak steps partially integrated in the cockpit cabinet
- Cockpit ceiling-mounted LED lighting + dimmer

Platform

- Access from cockpit via two GRP stairways with teak steps
- Two stainless steel handrails to access the stern platform
- Two tender mooring cleats
- Shower with hot and cold blender tap
- Manual foldaway swimming ladder installed on port side
- Teak deck and platform floor
- Aft door with hydraulic opening mechanism
- Stern platform with hydraulic lifting mechanism
- Platform dimensions: 1452 x 3555 mm (57.16 in x 139.96 in)

TECHNICAL SPECIFICATIONS S7 (FROM HULL 101)

- INSTALLABLE TENDER:
 - MAXIMUM DIMENSIONS OF TENDER - GARAGE: 3.30 x 1.70 m (10'10" x 5'7")
 - LIFT PAYLOAD EXCLUDING GRP, TEAK AND LADDER: 500 kg (1102 lb) OPEN
 - RECOMMENDED TENDER - GARAGE: Pirelli J33

Wheelhouse

- Internal dashboard consisting of:
 - BRONZE Package electronic navigation instrumentation (chart plotter with monitoring system, integrated water temperature, depth, speed, and chain length reading, engine control with automatic pilot and trip computer)
 - Communication systems (VHF)
 - Magnetic compass
 - Volvo Penta engine handles with single lever, automatic interceptor and LOW SPEED system
 - Volvo Penta maneuvering joystick with joystick driving
 - USB socket
 - Horn, anchor winch, chain washing pump, electric windows, windscreen wipers, windshield washers, engine battery parallel, and MUTE activation switches
 - Two adjustable air conditioning outlets
 - Adjustable leather-covered steering wheel
 - Emergency panel
- Electrically adjustable helm seat
- Storage under helm seats
- Electrically openable window

Saloon / Dinette and Galley

Saloon / Dinette

- Carpeted floors
- "C" shaped sofa on port side with two storage cabinets and two transformable coffee tables/dining table

- Two storage cabinets on starboard side with plate and glass racks
- Saloon side blinds
- LED lighting
- Saloon door blind

Galley

- Positioned on port side
- Wooden flooring
- Laminate worktop
- One steel double sink
- Ceramic glass four-hob range with silicone pot holder
- Electrically openable window
- Extraction hood on range with external extraction
- 20 l (0.71 cu.ft) microwave oven + grill
- 190 l (6.71 cu.ft) drawer fridge
- 95 l (3.35 cu.ft) drawer freezer under the helm seat storage cabinet

Corridor

- Central corridor leading down to lower deck with carpeted floor
- LED lighting
- Handrail
- Wall storage

Owner's cabin

- Located midship
- Manually openable double bed with storage
- Mattress, pillows and bedspread
- Wood essence furniture
- Upholstered headboard
- Two bedside tables with container tray
- Rectangular side windows with openable round portlight on each side
- Dressing zone mirror
- Manual side curtains

TECHNICAL SPECIFICATIONS S7 (FROM HULL 101)

- Double sofa with table on starboard bulwark
- LED lighting
- Two headboard wall lights
- Cabinet with visible frame and glass panels, vanity and pouf on fore bulkhead
- Courtesy lights
- Separate walk-in wardrobe containing chest of drawers, hanger bar, and shelves
- Carpeted floor
- Provision for TV system
- Access to owner's head from aft door, starboard side
- Upholstered headboard
- One wardrobe with hanger bar and shelves
- One wall unit with lacquered door shelf on the bulwark
- Storage under bottom bed
- Two wall lights
- LED lighting
- Panoramic window with openable built-in portlight
- Curtain
- Provision for TV system
- Carpeted floor

Owner's head

- TECMA toilet
- Shower enclosure with glass door, laminate bulkheads and grating
- Shower with slide bar and shower head on ceiling
- Cabinet in essence wood, behind the toilet
- Floors and bulkhead upholstery in wood essence
- LED lighting
- One openable round portlight with curtain
- One air extractor
- Head accessories
- A/C outlet
- Cabinet with washbasin above top, PVD black steel blender, washbasin top with lacquered storage compartments and wood essence storage cabinet under washbasin
- Mirror on aft bulkhead

Starboard side guest cabin

- Two single beds, placed at "L"
- Mattresses, pillows
- Wood essence furniture

Port side guest cabin

- Two single flat beds
- Mattresses, pillows
- Wood essence furniture
- Upholstered headboard
- One wardrobe on bulwark
- One wall unit with lacquered door
- One bedside table for both beds
- Underbed locker
- Two wall lights
- LED lighting
- Panoramic window with openable built-in portlight
- Curtain
- Provision for TV system
- Carpeted floor
- Access to head

Guest head

- Access from port guest cabin and from corridor
- TECMA toilet
- Sink under the top with black PVD steel blender
- Openable mirror for access to storage units
- Laminated washbasin top

TECHNICAL SPECIFICATIONS S7 (FROM HULL 101)

- Storage unit under washbasin
- Shower enclosure with glass door and grating
- Shower with slide bar
- Wood essence furniture
- Inside wooden access door
- Laminate-covered shower bulkheads
- Wood essence floor
- Head accessories
- LED lighting
- One openable round portlight with curtain
- One air extractor
- A/C outlet

VIP cabin

- Manually openable double bed; storage underneath
- Mattress, pillows
- Wood essence furniture
- Fabric headboard
- One wardrobe on starboard side and one on port side
- Mirrors on wardrobe panels
- Two wall units with wood essence (one per side)
- Two wall lights
- LED lighting
- Panoramic windows on both sides with two round openable built-in portlights (per side)
- Curtains
- Hatchway for exiting fore sunbed area above central ceiling
- Provision for TV system
- Carpeted floor
- Access to head

VIP head

- Access from VIP cabin
- TECMA toilet
- Sink under the top with black PVD steel blender
- Openable mirror for access to storage units
- Laminated washbasin top
- Storage unit under washbasin
- Shower enclosure with glass door and grating
- Shower with slide bar
- Wood essence furniture
- Laminate-covered shower bulkheads
- Wood essence floor
- LED lighting
- One openable round portlight with curtain
- One air extractor
- Head accessories
- A/C outlet

Crew room

- Access from starboard walk around, via semiautomatic pantograph door on deckhouse
- Stairs leading down to crew room
- Single bed
- Second foldaway bed
- Mattresses, pillows
- Wardrobe on starboard bulwark
- Storage compartment against head bulkhead
- Laminated floor
- One openable portlight and fabric blind
- Laminated furniture
- Sink cabinet with storage under the top
- Handrail
- Escape through opening in saloon display case

TECHNICAL SPECIFICATIONS S7 (FROM HULL 101)

Crew head

- TECMA toilet
- Shower with slide bar and grating
- One openable portlight and fabric blind
- Head accessories

Electric system

Main characteristics

- Onboard voltages:
 - 230 V - 50 Hz AC
 - 24 V DC from battery set
 - 12 V DC
- Main electric panel located in crew cabin and engine room:
 - 24 V
 - 230 V
- Distribution electric panel located in the saloon:
 - 24 V
 - 230 V
- Dimmers for light switches in saloon and cockpit.
- Junction boxes are installed in all areas.

Galvanic current insulation

- Zinc anodes
- Volvo ACP (Active Corrosion Protection system)

Generator

- One 7 kW generator in the engine room

Shore power sockets

- One shore power socket 230 V - 50 A
- The AC power sources are controlled from the main electric panel, with a digital multimeter for the 230 V network. The power sources are protected by fuses and their introduction in the network is made by a pushbutton panel or the monitoring system.

Batteries

- Services: six AGM batteries 90 Ah - 24 V

- Engines: six AGM batteries 90 Ah - 24 V
- Generator: one battery 70 Ah - 12 V for generator
- One battery charger 80 Ah - 24 V for the service batteries
- One battery charger 30 Ah - 24 V for engine battery sets
- One battery charger 12 Ah - 12 V for generator battery sets

Lights and sockets

- AC sockets: 230 V for main utility power supply, EU type
- DC sockets: 12 V cigarette lighter type and USB
- 24 V LED lighting

Electronic navigation instruments

- For STD equipment, see the paragraphs on "Sportfly" and "Wheelhouse"
- For a detailed list of alternative/additional equipment available, please refer to the Optionals price list

N.B.

The electronics are constantly being updated, therefore the indicated configuration may be subject to changes.

Bilge system

- Five 24 V automatic motor pumps: three in engine room, one in crew room and one aft of the owner's cabin
- Five bilge level alarms
- Three manual pumps: two in engine room and one in owner's cabin

TECHNICAL SPECIFICATIONS S7 (FROM HULL 101)

Fire extinguishing system

- Seafire system consisting of a gas extinguisher, automatic engine switch off control unit, audible alarm and control panel

Fuel system

- Two aluminum fuel tanks, total capacity 3800 l (1003.9 US.liq.gal.)
- Two breathers on bulwarks
- One electronic diesel level gage
- One diesel level gage
- Double diesel filters for each engine
- One filter for generator
- Two refueling plugs on walk arounds (one per side)
- Remote diesel shut-off (engine and generator) via 24 V solenoid valve
- Tanks communicating pipe provided with 24 V solenoid valve and one manual valve for each tank

Fresh water system

- 1000 liter (264.2 US.liq.gal.) tank
- Water refilling on starboard walk around
- Level sensor
- Two tank vents on bulwarks
- One water pressure pump with electronic control
- One 80-liter (21.1 US.liq.gal.) water heater
- Hot/cold water line: distributed via network supplied by water pressure pump or shore connection.
- System that can be isolated by ACORN manifolds
- Toilet fresh water supply
- Provision for water maker

Black water system

- One 350 l (92.5 US.liq.gal.) polyethylene tank
- Level sensor
- Two tank vents on bulwark with anti-odor filter
- Tank outboard emptying pump with manual control
- Tank suction point on port walk around
- Outboard discharge
- Tank washing system with fresh water supplied from shore
- Tecma toilet (with macerator pump). All toilets discharge into a tank

Gray water system

- One 200 l (52.8 US.liq.gal.) polyethylene tank
- Internal and external utilities water discharge in central collection tank
- Two tank vents on bulwark
- Level sensor
- Manual/automatic tank draining
- Tank washing system with fresh water supplied from shore

Seawater system

- Engine cooling system: dynamic seawater intakes in keel with anti-block valve on each engine
- Generator cooling system: seawater intakes with filter and valve
- Air conditioning cooling system: seawater intakes with filter and valve
- Chain washing pump: one seawater intake with valve

TECHNICAL SPECIFICATIONS S7 (FROM HULL 101)

Ventilation/extraction

- Head ventilation: with 24 V extractors
- Two axial fans in the engine room for air recirculation
- Engine room: natural ventilation, forced extraction with one extractor per side
- Separator filters

Other systems

- Gas discharge system:
 - Water/fumes separator for generator with side exhaust
- Hydraulic system:
 - 24 V electro-hydraulic pump for garage door and platform lift mechanism
- Engine exhaust: built in the POD

- One Owner's manual
- One AZIMUT document folder
- One wooden boat model
- One AZIMUT warranty service booklet
- One set of stainless steel cutlery
- One set of porcelain plates
- One set of glasses
- One floating keyring
- One large bag with logo for manuals
- One remote control holder with logo
- One shower pipe storage bag
- One stainless steel scheduled maintenance kit
- One pin wrench for locking stainless steel pins

Air conditioning system

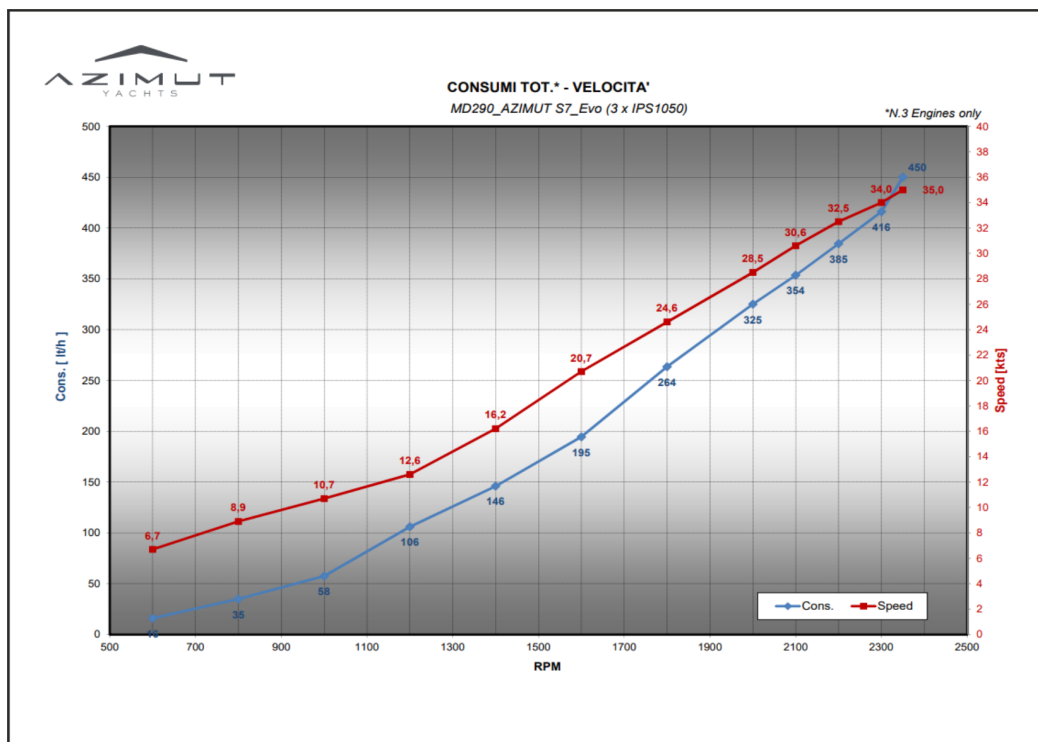
- CONDARIA water-based system
- One compressor in crew cabin, 120.000 total BTU with inverter
- One seawater pump with relevant intake
- Fan coils distribution:
 - Saloon and Dinette: 74,000 BTU
 - Owner's cabin and head: 18,400 BTU
 - VIP cabin and head: 12,500 BTU
 - Port side guest cabin and head: 9,200 BTU
 - Starboard guest cabin 6.200 BTU
 - Crew room: 9,200 BTU
- Each cabin has its own control panel making it independent

Equipment

- One telescopic boat hook
- Five mooring lines
- Fender lines: 24 m (78' 9")
- One anchor chain stopper
- Eight fenders
- eight black fender covers

TECHNICAL SPECIFICATIONS S7 (FROM HULL 101)

Annex 2 - Performance / consumption chart



TECHNICAL SPECIFICATIONS S7 (FROM HULL 101)

NB

The contents of this document are for informational purposes only and do not constitute an opinion or guarantee regarding the characteristics of the pleasure craft described herein.

Azimut|Benetti S.p.A. therefore does not guarantee the accuracy, completeness or updating of the information and specifications contained in this document and, in particular, declares that certain details and technical specifications described herein may differ for the models available.

Therefore, Azimut|Benetti S.p.A. does not make any guarantee regarding the use of the content, details, specifications or information contained in this document in terms of correctness, accuracy, adequacy, utility, timeliness, reliability, in any case, within the limits established by law.

